

# XANBOO™ BASIC SYSTEM CONTENTS



XCC405  
**COLOR VIDEO CAMERA** with built-in  
**MOTION SENSOR** and **MICROPHONE**



XBX105  
**XANBOO SYSTEM CONTROLLER**



XXS001  
**XANBOO SOFTWARE CD**



XWM001  
**CAMERA WALL MOUNT BRACKET**  
with mounting screws



XTT001  
**CAMERA TABLE TOP STAND**



XEC060  
**60' CAMERA EXTENSION CABLE**



XPA012  
**12V ADAPTER**

The following instructions will make your installation of your **XANBOO INTERNET HOME MANAGEMENT SYSTEM** easy, and help you to customize your Xanboo system to your preferences.

**IMPORTANT:** Do not connect your Xanboo system controller to your PC before the installation wizard prompts you to.

Your Xanboo system is installed and operated in **FOUR STEPS**.

**STEP 1.** The **XANBOO SOFTWARE CD** will guide you through installing your software on your PC and installing your Xanboo hardware.

**STEP 2.** The Xanboo set up wizard will help you to configure the software on your PC.

**STEP 3.** You will register your personal Xanboo.com account.

**STEP 4.** You can either wall-mount or table-mount your color video camera.

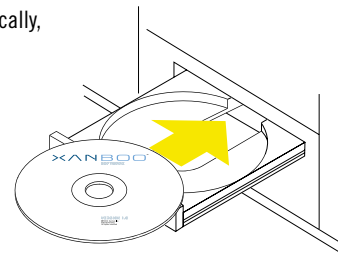
Note: If you purchased additional Xanboo cameras, they will be installed during this initial set up process.

If you have purchased Xanboo sensors, they will not be installed during this initial set up process. Instead, after you have completed the four steps above, choose **SET UP SENSORS** from the **SET UP** menu of your Xanboo software.

- A. Before connecting the system hardware, place the Xanboo Software CD in your computer's CD drive. The set-up wizard will start automatically.\*
- B. When the Installation screen appears, select **"INSTALL XANBOO"**. You will be guided through a step-by-step process for the software installation.
- C. During the software installation, you will be asked to connect your System Controller and other Xanboo devices. At this point, proceed to **STEP 1B: INSTALLING YOUR XANBOO HARDWARE**.

\*Note: If the Windows set-up wizard doesn't start automatically, do the following:

Click on **"START,"** then **"RUN."**  
 In the next screen, click on **"BROWSE,"** then **"LOOK IN."**  
 Locate your CD ROM drive and select it.  
 Next, locate the file named **"XANSETUPMENU.EXE"** and select it. Click on **"OPEN,"** then **"OK."**  
 The set-up wizard will start automatically.



## STEP 1.B

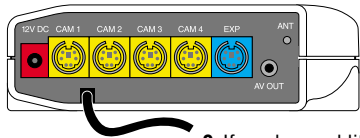
### STEP 1B: INSTALLING YOUR XANBOO HARDWARE

#### CONNECTING YOUR SYSTEM CONTROLLER

For your convenience, all the cables are color coded to match the ports on the **SYSTEM CONTROLLER**.

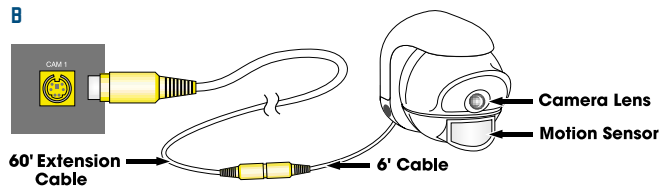
A. On the back of the **SYSTEM CONTROLLER**, locate the port named Cam 1.

B. Connect the cable from your **XANBOO™ COLOR CAMERA** to Cam 1.



C. If you have additional cameras connect the cables to Cam 2, Cam 3, and Cam 4.

(Note: Before connecting the **SYSTEM CONTROLLER** to your computer, make sure that all the cameras are connected.)



D. Plug the **12V** power adapter into the **12V** input on the back of your **SYSTEM CONTROLLER**.

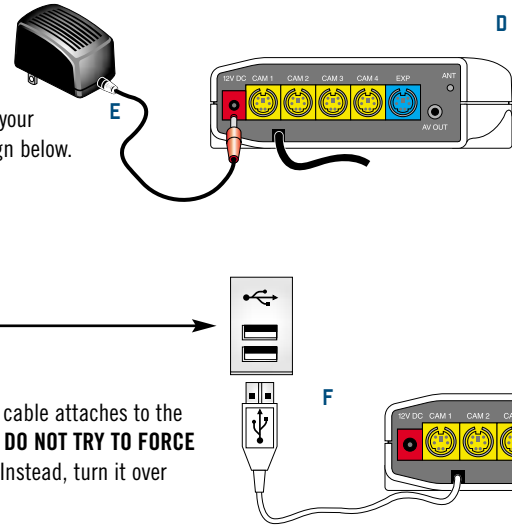
E. Plug the **12V** power adapter into an electrical outlet.

F. When prompted by the installation wizard plug the USB cable from the **SYSTEM CONTROLLER** to the USB port on your computer. The USB port on your computer is usually marked with the sign below.



USB PORT ON COMPUTER

Note: The USB plug at the end of the USB cable attaches to the USB port on the computer in only one way. **DO NOT TRY TO FORCE THE PLUG INTO THE PORT** if it doesn't fit. Instead, turn it over and try again.



### INSTALLING DRIVERS

Once you have plugged your **SYSTEM CONTROLLER** into the USB port on your PC, the Windows® Plug and Play feature will recognize your **SYSTEM CONTROLLER** and automatically install the relevant drivers.

### LOCATING DRIVERS

If the Windows® Plug and Play feature is not able to locate the necessary drivers, the “**ADD NEW HARDWARE**” wizard will appear. Click on “**NEXT**”, and follow the steps below to locate and install the relevant drivers.

- A. Select “**SEARCH FOR THE BEST DRIVER FOR YOUR DEVICE**,” and then, click on “**NEXT**.”
- B. Select “**CD ROM drive**,” and then, click on “**NEXT**.” The wizard will search for the driver.
- C. After the driver has been located, click on “**NEXT**” in the following screen. This will install the drivers to your PC.
- D. After the drivers have been installed, click on “**FINISH**” and you will continue with the installation process.

**Note:** The locating drivers process for Windows® Me and Windows® 2000 may vary from the above

### WINDOWS® DRIVERS

**\*NOTE:** You may be prompted to insert your Windows® CD during driver installation.

If so, follow the steps below:

1. Remove the Xanboo CD from your CD drive.
2. Insert your Windows® CD into the drive (not included with **XANBOO SYSTEM CONTROLLER**).
3. Follow the prompts on the screen to load the necessary Windows® files from the CD. (See “locating drivers” section on previous page.)
4. Remove the Windows® CD from the CD ROM drive.

You will then be prompted to continue the installation of your **XANBOO SOFTWARE**.

## STEP 2

### ◀ USING THE XANBOO SET UP WIZARD ▶

The Xanboo software will now guide you through 7 setup screens to help you configure your Xanboo system. These screens are outlined below. When you are done, you will move to Step 3, registering and setting up your account at Xanboo.com.

#### SCREEN 1

“**WELCOME TO XANBOO**” gives an overview of the Wizard’s functions. Clicking on “**NEXT**” at the bottom right of the page advances to the next page.

#### SCREEN 2

“**INTRODUCTION TO DETECTING CAMERAS**” reviews how to connect a camera to your System Controller.

#### SCREEN 3

“**DETECT CAMERAS**” enables you to name cameras by clicking the text bar under each camera’s image, in addition to installing cameras.

#### SCREEN 4

“**CONFIGURE YOUR INTERNET CONNECTION**” allows you to set and confirm your Internet connection.

#### SCREEN 5

“**SET UP YOUR XANBOO.COM ACCOUNT**” allows you to choose a user name and password for Xanboo.com.

#### SCREEN 6

“**TEST THE XANBOO SYSTEM**” enables you to test each camera.

#### SCREEN 7

“**COMPLETE YOUR REGISTRATION**” captures and saves all of your changes.

### STEP 3

## REGISTERING YOUR PERSONAL XANBOO.COM ACCOUNT ON THE INTERNET

10

11

**XANBOO** will guide you through registering your account at Xanboo.com, including your billing and account information.



Your personal Xanboo.com account enables you to use your "**XANBOARD**" to:

- › See a list of all event notifications.
- › Click to see date/time stamped sensor triggered video pictures.
- › Click on MOVIE ICONS to see 10 second sensor triggered video clips.



Use your "**XANFRIENDS**" to assemble group lists to send videos and files for sharing.



Use your "**XANFOLDER**" to store videos, files, and event notifications for sharing.

Use your "**XANCONTROL**" to:

- › Select cameras and view real-time videos.
- › Arm individual sensors.
- › Set up notifications through Control Panel/ Notification Set-up.
- › Adjust video picture quality.
- › Capture video photos and 10 second video clips on your "**XANBOARD**".



### FOR A LOW MONTHLY CHARGE, YOU ENJOY

- ✦ Unlimited notification of sensor detected events to your e-mail, pager, text messaging cell phone or PDA (your choice).
- ✦ Real time video, time-stamped video stills and 10-second recorded video clips.
- ✦ Unlimited use of accessory video cameras, sensors and control modules.
- ✦ 5MB of **KANBOO™** memory storage (approximately 350 video stills or equivalent).
- ✦ **Free** Xanboo Software upgrades as they are released for as long as you continue to subscribe.

### MONTHLY SUBSCRIPTION

**\$9.95/MONTH**

BASED ON 1 YEAR SUBSCRIPTION OTHERWISE \$14.95/MONTH

FREE-First month of service

Includes 5Mb of storage (Approx. 350 photos or equivalent)

Unlimited notifications to your e-mail, pager, text-messaging cell phone or PDA

### OPTIONAL SERVICES

ADDITIONAL STORAGE SPACE

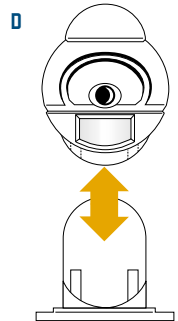
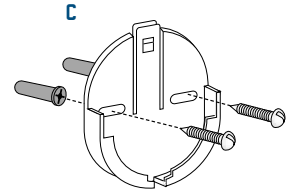
100 Mb \$4.95/month ✦ 500 Mb \$9.95/month ✦ 1 Gb \$19.95/month

Add \$9.95/month for each additional System Controller

## STEP 4

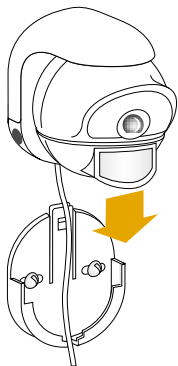
To place your camera on a flat surface, use the attached table top stand. If you wish to wall mount your camera, follow the steps below.

- A. Stop running the Xanboo software.
- B. Unplug the camera you are going to mount from the back of the Xanboo System Controller .
- C. Select the area in which you wish to mount your **KANBOO COLOR VIDEO CAMERA**, and use the provided screws and mollys to secure the bracket in place.
- D. Remove the table top stand from the **KANBOO COLOR VIDEO CAMERA** by pulling it away from the camera and sliding the cord through.



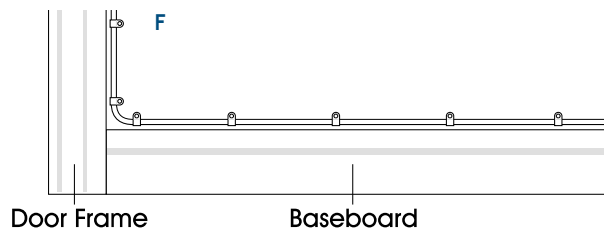
**TABLE TOP**

E



E. Slide your **XANBOO COLOR VIDEO CAMERA** into the wall mount bracket and adjust it to your viewing preference.

F. Use cable clips provided to secure the camera cable along baseboards and around doors. Try to avoid aligning the video cable next to electrical wires for extended distances as the electric field of the wires may interfere with picture quality.



G. Re-connect your camera to the port it was removed from on the back of your Xanboo System Controller.

## TOUR YOUR XANBOO SYSTEM

### TOUR YOUR XANBOO SYSTEM BY ACCESSING EACH OF THE FUNCTIONS ON YOUR XANBOO PC CONTROL SCREEN.

**SET UP** Launches the Set-Up Wizard

**LOG** Gives you a log of system events

**HELP** Enables you to find answers by either "Search" or "Index"

**XANBOO.COM**  
Launches your personal Xanboo.com account Web pages

**MONITOR** Shows the direct video feed from any camera you specify from the drop down menu

Remote live video webcam is operational

Indicates that the Xanboo software is communicating with Xanboo.com

**ARM** Activates sensors so they communicate with Xanboo.com when triggered. Also turns system **ON**

**ON** Enables remote live webcam viewing and remote control of the Xanboo system



**OFF** De-activates operation of camera(s) and sensor(s) through the Internet

**DROP-DOWN MENU**  
For camera selection

Closes down the Xanboo Program on your PC.

Minimizes the Xanboo PC control panel

**CAPTURE IMAGE**  
Enables capture of a snapshot of the image shown in the preview video area

**CAPTURE VIDEO**  
Enables capture of a short motion video clip shown in the preview video area

To use your installed **XANBOO INTERNET HOME MANAGEMENT SYSTEM** it must be launched on your PC and activated when you access your Xanboo.com account from any remote location.

- First, **LAUNCH** your Xanboo PC control screen by clicking your desktop Xanboo Icon and then either ARM your sensor(s) or camera(s) by clicking the “**ARM**” button on the left vertical frame border so that they will transmit, or click the “**ON**” button to enable you to remotely view live webcam pictures and to remotely control the system.
- Next, from anywhere with Internet access, log in to your xanboo.com account using your user name and password, and view remote cameras by going to XANCONTROL and selecting the camera you want to see.

Xanboo supplies a growing number of accessories to enable you to customize your system to your needs. The accessories below are available now. Additional accessories, including On/Off Control Modules, Garage Door Openers and Wireless Cameras, will be available soon, so check with your local retailer for availability information.

#### BASIC ACCESSORIES

Color Video Camera with Built-in Motion Sensor/Microphone	XCC405
Temperature Sensor	XTS165
Door/Window Sensor	XDS125
Acoustic Sensor	XAS135
Water Sensor	XWS145
Power On/Off Sensor	XPS155
120' Cable (2x60 Feet)	XEC120
TV Enabling Cable	XAV315

## XANBOO™ HELP CENTER

[www.xanboo.com/help](http://www.xanboo.com/help)

### ◇ FAQ

A GREAT PLACE TO START! Answers to your most frequently asked questions.

**START → PROGRAMS → XANBOO → FREQUENTLY ASKED QUESTIONS**

### ◇ TUTORIAL

Quickly learn how to get things done at Xanboo.com

**START → PROGRAMS → XANBOO → TUTORIAL**

### ◇ E-MAIL SUPPORT

Fast answers to your questions from [help@xanboo.com](mailto:help@xanboo.com)

### ◇ PHONE SUPPORT

If all else fails, try Xanboo Phone Support - Call us **TOLL FREE** at **1-877-XANBOO1 (877-926-2661)**.

In the event of breakage or malfunction not incurred by abnormal wear, damage, or misuse within one (1) year of date of purchase, the manufacturer Xanboo Inc. will replace the damaged hardware or software unit or repair such item. Xanboo Inc. retains the right to determine replacement versus repair on warranty returns. All warranty returns must be returned to the supplier from whom the product was purchased.

Xanboo Inc. has thirty (30) days to determine replacement/repair and mail the SKU component to the consumer. The consumer must include the following information for warranty return acceptance. Without the minimum information, the SKU will be returned to the consumer without further action.

MINIMUM information for warranty returns include:

- ◇ Consumer Name
- ◇ Consumer Telephone number
- ◇ Purchase location or manufacturer (Retailer, Telephone company, other)
- ◇ Consumer Address
- ◇ Consumer E-mail address (optional)
- ◇ Purchase date
- ◇ Unit(s) to be replaced

Specific comments regarding breakage or malfunction (very important in accelerating your warranty return action).

Allow thirty (30) days following warranty mailing to receive your replaced/repaired SKU component. If you do not receive your SKU component within thirty (30) days, please call 1-877-XANBOO1 (1-877-926-2661).