

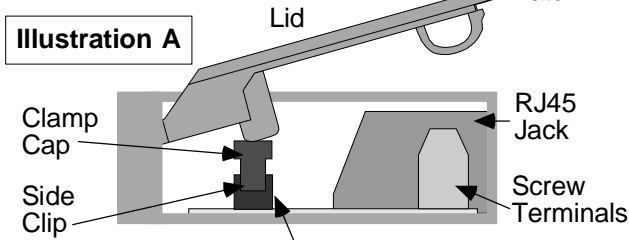
HOT LINK™ Emitter Extension Kit PRO! Instructions

Microsmith
WWW.HOT-LINK.COM INC.

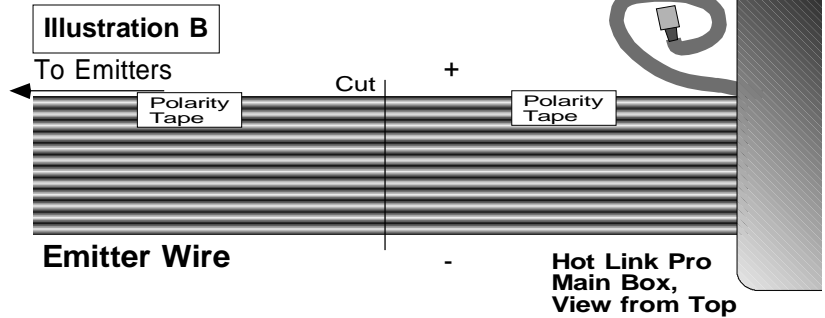
Thank you for purchasing the Emitter Extension Kit for the HOT LINK PRO! A kit for extending all six emitters for Hot Link Pro with just two wires. This Kit extends HOT LINK PRO IR Emitters over 100 feet from the main box so remote controlled equipment can be located in closets or cabinets in another room. This Kit is required for adding the additional six emitter kit, Emitter Expansion Kit X6.

Caution: DO NOT enclose equipment not meant to be fully enclosed. While most equipment may not overheat in a moderately-sized cabinet, some equipment such as high-powered amplifiers and receivers may overheat and cause damage. Provide ventilation through back of cabinet.

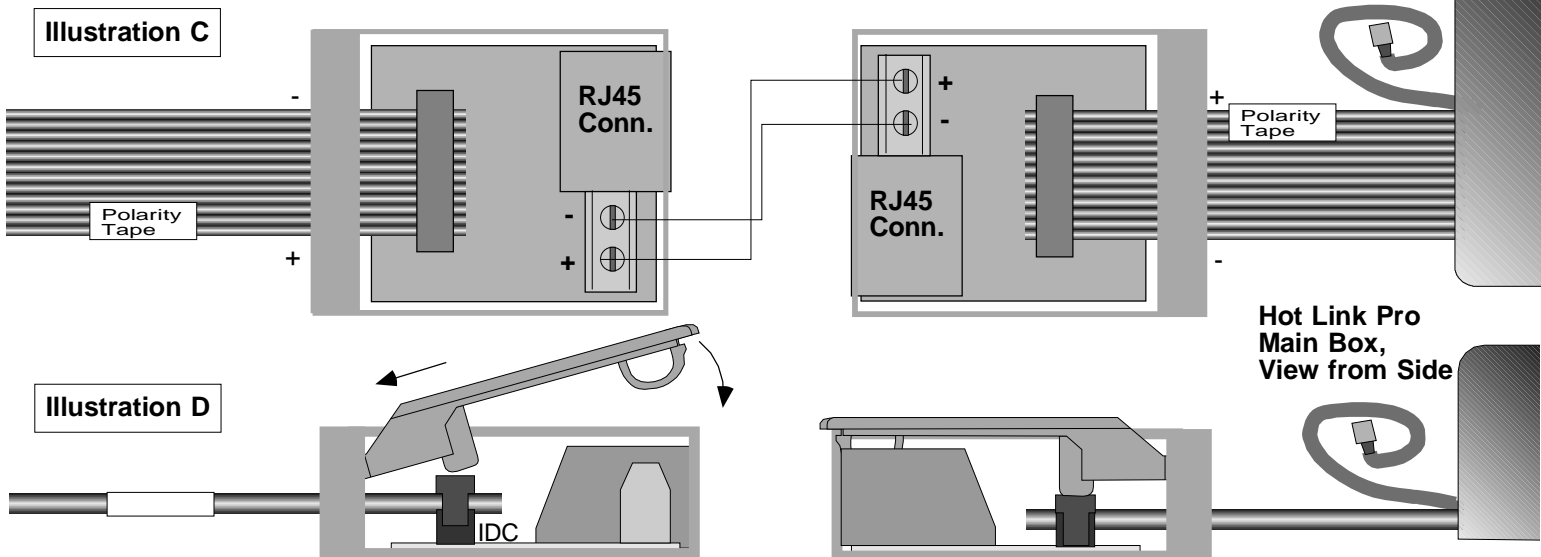
Cut away view of "IDC" box



Insulation Displacement Connector, referred to as IDC.



- 1 Open Box and remove Clamp Cap from inside.
- 2 Peel back Confirmation LED wire pair all the way back to the Hot Link Pro Main Box. DO NOT CUT CONFIRMATION LED WIRES.
- 3 Mark Remaining IR Emitter ribbon cable polarity in 2 places, with tape at about 2 inches and 6 inches from Main Box. Note that tape is on our designated + side which is toward the Confirmation LED wires. See Illustration B.
- 4 Cut ONLY these 12 wires as a set, with a sharp pair of scissors, between taped polarity markings.
- 5 Flip emitter wire set over so that the marker tape is now on the opposite side, then insert cut end into an IDC Box Through the back slot all the way over the IDC connector. Then position Clamp Cap of IDC connector on top with side clips aligned. The Clamp Cap will come to rest in the pre-clamped position, ready for clamping action when lid is closed in next step. See Illustration C and A.
- 6 Make certain ribbon cable from emitter set is properly aligned in IDC connector and Clamp Cap is properly aligned. Insert hinge pins on lid into back end of box. To close lid on IDC Box, force lid toward hinge joint, and press closed. This action clamps emitter ribbon cable onto IDC connector. See Illustration D. Open box to check that Clamp Cap side clips are flush with connector body. If not, close box and apply more pressure. See Illustration D.
- 7 Insert ribbon cable from Hot Link Pro Box into second IDC Box without flipping cable over.
- 8 Make certain ribbon cable from Hot Link Pro Box is properly aligned in IDC connector and Clamp Cap is properly aligned. Insert hinge pins on lid into back end of box. To close lid on IDC Box, force lid toward hinge joint, and press closed. This action clamps emitter ribbon cable onto IDC connector. See Illustration D. Open box to check that Clamp Cap side clips are flush with connector body. If not, close box and apply more pressure. See Illustration D.
- 9 Reopen boxes and wire + to + and - to - using screw terminals. Do not over tighten. Category 5 cable with RJ45 connectors can also be used to complete connections between IDC Boxes. Close boxes. If phone cord is used, at least one RJ45 cable must be used, with appropriate adapters to restore polarity.



Detailed Guide and Hot Tips on Reverse

Hints for Best Results

Always ensure that there is enough pressure toward the hinge joint while closing lid to perform clamping action.
Press against a table to increase pressure if not clamped fully.

Ribbon cable may need to be "curved" upon insertion to come up over the IDC pins.

To remove IDC Clamp Cap: Insert a small screw driver into the slots on Clamp Cap and GENTLY press side clips outward while lifting. Lift one side just enough to rest the clip, then the other. Do not pull hard or the opposite side will break. These side clips are fragile. If broken the Clamp Cap can still be used but it will be more difficult to align the Cap.

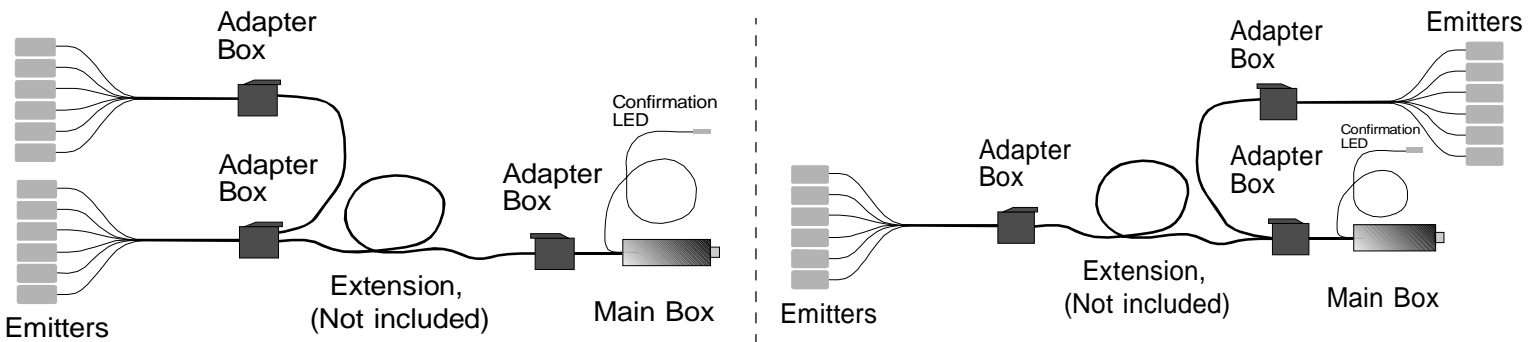
Cable to use for connecting IDC Boxes

Ethernet or category 5 cable with RJ45 Connectors will work well for emitter extension cables. Reverse ethernet cables will also work as the 2 center wires are the same in both types of cables. Phone cords are reverse polarity from one end to the other. Phone Cord can be used with an ethernet cable and adapters to maintain polarity. Any twin lead wire set may be used such as speaker wire, phone hookup wire, twin lead even category 5 without connectors by using the screw terminals provided. Extensions can be over 100 feet long. Do not run parallel to high power or noisy wires or bundled within a core of noisy wires. Check for system noise by observing the confirmation LED when remote controls are not in use. This LED should be fully off with no glow at all.

Connecting Additional 6 Emitter Kit X6

Add additional 6 emitter kit X6 by using supplied Y adapter or add parallel wires on screw terminals.

The additional 6 emitters may be added at either end of the emitter extension kit. This allows either, 12 far away, 12 near or 6 near and 6 far away.



Main instructions on reverse.

Accessories and Models

- ▶ Additional Receiver Eye for connecting to other IR emitters, supplied with "Y" RCA adapter
- ▶ Coax Extender Cable, custom lengths to 25 feet. (additional length may reduce IR distance)
- ▶ Add 6 emitters with Emitter Expansion Kit X6
- ▶ Emitter Extension Kit extends all emitters with just 2 wires
- ▶ Replacement adhesive tape, free for the asking
- ▶ Want 12 emitters from one box? Try Hot Link Pro X12 with 12 emitters on 8 foot cables

- ▶ For indoor use only.
- ▶ Liability of product limited to cost of product replacement.
- ▶ Non-specified use is the responsibility of the user.
- ▶ DO NOT OPEN Power Supply or Repeater Box: No user serviceable parts inside.
- ▶ Do not expose HOT LINK PRO Accessories to water, moisture or rain.
- ▶ Refer servicing to qualified personnel. Read all instructions before use, retain for future reference.

For service, and accessories,
call: 800-999-8846
WWW.HOT-LINK.COM



P.O. BOX 7829
Jackson, WY 83002