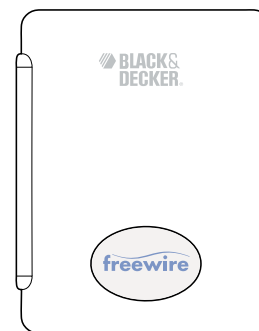


BLACK & DECKER®

freewire™ Lamp Receiver

INSTRUCTION MANUAL

Cat. No. FWLR



▲GENERAL SAFETY RULES

▲**WARNING:** Read and understand all instructions. Failure to follow all instructions listed below may result in electric shock, fire, property damage and/or serious personal injury. For additional information refer to the manual which came with your FREEWIRE kit.

SAVE THESE INSTRUCTIONS

▲**WARNING:** Do not use any FREEWIRE product to control any device where unexpected or unattended turn on/off could cause serious personal injury and/or property damage. Interference, interruptions, or surges in the electrical system, or malfunction may cause unexpected turn on/off of plugged in devices.

▲**WARNING:** Do not use any FREEWIRE product to control any device where failure to operate could cause serious personal injury and/or property damage. Interference, interruptions or surges in the electrical system, or malfunction may cause plugged in devices to fail to operate as expected.

▲**WARNING:** Do not use any FREEWIRE product to control any medical device. Using any FREEWIRE product to control any type of medical device could result in serious personal injury.

▲**WARNING:** Do not use any FREEWIRE product to control any device that exceeds the rating for that FREEWIRE product. Using a FREEWIRE product to control a device that exceeds the rating for that product could result in serious personal injury and/or property damage. The ratings for FREEWIRE products are as follows:

- BULB RECEIVER - 150 watts - incandescent bulbs only.
- LAMP RECEIVER - 300 watts - lamps with incandescent bulbs only.
- MESSENGER HUB - 500 watts - lamps with incandescent bulbs only.
- OUTDOOR LAMP RECEIVER - 500 watts - lamps with incandescent, fluorescent, halogen or low voltage bulbs only.
- APPLIANCE RECEIVER - 15 amp resistive load small appliances, 1/3HP motor load, 500 watts lamps with incandescent, fluorescent or halogen bulbs only, 400 watts for television.

If the FREEWIRE product you intend to use is not listed here, consult the instruction manual for that FREEWIRE product or call 1-800-544-6986 to determine the applicable rating before plugging in or using that FREEWIRE product.

▲**WARNING:** To reduce the risk of electric shock or fire, do not expose any FREEWIRE product to rain or moisture. If a FREEWIRE product is exposed to rain or moisture, immediately disconnect the FREEWIRE product from the AC outlet to reduce the risk of electric shock or fire and consult authorized service personnel. **NOTE:** Outdoor Lamp Receiver may be used outdoors. Bulb Receiver may also be used outdoors if mounted in correct orientation.

▲**WARNING:** To reduce the risk of electric shock, do not disassemble any FREEWIRE product. No user-serviceable parts are inside.

▲**WARNING:** To reduce the risk of electric shock, do not use any type of plug adaptor with this product.

▲**WARNING:** Do not use a Bulb Receiver, Lamp Receiver, Messenger Hub or Outdoor Lamp Receiver to control an appliance. Using a Bulb Receiver, Lamp Receiver, Messenger Hub or Outdoor Lamp Receiver to control an appliance could damage the appliance or the receiver, which could result in serious personal injury and/or property damage.

▲**WARNING:** Do not use a Bulb Receiver or Lamp Receiver to control a lamp or fixture that already has a dimmer on it. Using a Bulb Receiver or Lamp Receiver to control a lamp or fixture that already has a dimmer on it could damage the lamp, fixture or receiver, which could result in serious personal injury and/or property damage.

▲**WARNING:** Use only incandescent bulbs in lamps that are to be controlled by the Lamp Receivers. Using any other type bulbs could damage bulbs and/or Lamp Receivers.

▲**WARNING:** Use only incandescent bulbs in Bulb Receivers. Using any other type bulbs could damage bulbs and/or Bulb Receivers.

▲**WARNING:** Do not use any intercom or monitoring system, including a baby monitor, that uses the house wiring to transmit signals in permanent transmit (or talk) mode when using FREEWIRE products. Transmissions from an intercom or monitoring system that uses the house wiring to transmit signals could interfere or block out FREEWIRE transmissions in permanent transmit (or talk) mode. It is also possible that a neighbor's intercom or monitoring system could cause unexpected operation, including failure to operate, of your FREEWIRE system, or that your FREEWIRE SYSTEM could cause unexpected operation, including failure to operate, of your neighbors intercom or monitoring system.

▲**WARNING:** If unintended operation of any FREEWIRE product is observed, unplug all FREEWIRE products immediately until (1) the source of the interference is identified and eliminated through selection of a different HOUSE CODE to ensure that neither system causes unintended operation of the other system or (2) a blocking filter, Black and Decker Model number PZZ01, is installed. Call 1-888-678-7278 to order. Professional installation recommended. If you cannot identify the source of interference by talking with neighbors who are using a FREEWIRE or compatible system and you do not want to install a blocking filter, or if you have any questions about identifying or eliminating interference, please call 1-800-544-6986 before plugging in or using any FREEWIRE product.

Remember to exercise good common sense when using your FREEWIRE system - especially when attaching unattended appliances or devices to the system. There can be unexpected consequences if FREEWIRE products are not used with care. For example, an empty coffee pot can be remotely turned on due to unintended operation or interference from a neighbor's FREEWIRE or compatible system. If that should happen, your coffee pot could be damaged from overheating, which in turn could cause a fire or create a risk of electrical shock. As another example, if an electric heater is turned on unexpectedly while clothing is draped over it, a fire could result. Accordingly, **DO NOT USE** the FREEWIRE system for the control of medical devices, heating appliances, such as portable heaters, or any other appliance or device that could cause physical injury or property damage if turned on or off while unattended. Similarly, **DO NOT USE** the FREEWIRE system for the control of any appliance or device that could cause physical injury or property damage if it fails to operate as expected. Interference, interruptions or surges in the electrical system, or malfunction may cause plugged in appliances or devices to fail to operate as expected. For example, if a pipe heater controlled by a FREEWIRE system fails to operate as expected, the pipes could freeze and rupture. For these reasons, it is important to read, understand and follow all instructions in this manual, and to consider carefully the potential consequences of unattended or unexpected operation, or failure to operate, of an appliance or device before you attach it to a FREEWIRE system.

FCC CAUTION

THIS DEVICE COMPLIES WITH PART 15 OF THE FCC RULES.

OPERATION IS SUBJECT TO THE FOLLOWING TWO CONDITIONS:

(1) THIS DEVICE MAY NOT CAUSE HARMFUL INTERFERENCE, AND

(2) THIS DEVICE MUST ACCEPT ANY INTERFERENCE RECEIVED, INCLUDING INTERFERENCE THAT MAY CAUSE UNDESIRE OPERATION.

This equipment generates and uses radio frequency energy, and if not installed and used properly, that is, in strict accordance with the manufacturers instructions, it may cause interference to radio and television reception. It has been type tested and found to comply with the limits for remote control devices in accordance with the specifications in Sub Parts B and C of Part 15 of FCC Rules, which are designed to provide reasonable protection against such interference in a residential installation. However, there is no guarantee that interference will not occur in a particular installation.

If this equipment does cause interference to radio or television reception, which can be determined by unplugging the equipment, try to correct the interference by one or more of the following measures.

- Reorient the antenna of the radio/TV experiencing the interference.
- Relocate the interference with respect to the radio/TV.
- Move the interference away from the radio/TV.
- Plug the interface into an outlet on a different electrical circuit from the radio/TV experiencing the interference.
- If necessary, consult your local Dealer for additional suggestions

NOTE: Modifications to any of the components in this kit will void the user's authority to operate this equipment.

DEFINITIONS OF FREEWIRE TERMS

What is the UNIT CODE?

The unit code allows you to assign a number (1 - 16) to any Freewire unit in your home system. For example, if you assign the unit code number 5 to a Lamp Receiver, the lamp will turn on and off when you activate the number 5 on your Freewire remote control. If you want a multiple of Lamp Receivers to respond to a single number on your remote, there is no problem with setting them all to the same unit code number.

What is the HOUSE CODE?

The house code prevents interference with other Freewire systems that may be in your neighborhood. When you set your house code to a letter (A - P) you are choosing a distinct communication language between all parts of your Freewire system. It is essential that all units in your Freewire system are set to the same house code letter for it to operate correctly.

What is the Remote Control SYNCHRONIZATION?

When you first install your Freewire units it is essential that you match up the wireless Remote Controls (Indoor Remote and Key chain Remote) with the plugged in Receiver Hub. This will synchronize their wireless communication in a distinct way that prevents interference with other Freewire systems that may be in your neighborhood.

Why are there COLOR SEGMENTS on the unit code wheels?

The six colors (or zones) help you to allocate unit codes to various parts of your house. For example, if you wanted to control three plug in lamps in your living room you might allocate them the unit code numbers 5, 6 and 7 which are part of the green segment (green zone). Green becomes a quick reference to controlling those lamps from your remote control.

What are GROUPS?

Groups are shortcut buttons to operating any combination of up to four receiver unit codes. For example, you may wish to create a 'welcome home' group control. If you had your entrance light(s) set to 1, your hall lamp set to 5, your living room lamp set to 8 and your kitchen light set to 11 they could all be turned on/off by a single group key. It is essential to first program the group with the Messenger Hub and Indoor Remote before you can use this function.

What does the HOUSE button do?

When you press HOUSE ON all the Lamp Receivers and the Messenger Hub in your Freewire system will turn on (for safety reasons, it will not turn on appliance receivers). When you press HOUSE OFF any unit in your Freewire system will turn off (both lamp and appliance receivers) - this is fast way to turn off all your Freewire units.

Step by step operating instructions for the LAMP RECEIVERS

A Quick Note before You Set Up the LAMP RECEIVERS:

▲WARNING: For indoor use only. If a LAMP RECEIVER is exposed to rain or moisture, immediately disconnect the LAMP RECEIVER from the AC outlet to reduce the risk of electric shock or fire and consult authorized service personnel.

▲WARNING: Use only incandescent bulbs (up to 300 watts total) in lamps that are to be controlled by Lamp Receivers. Do not use fluorescents, halogens or low voltage lighting systems. Using any other type bulbs could damage bulbs and/or Lamp Receivers. Attempting to control any other device by the Lamp Receivers, could damage that device and may damage the Lamp Receiver, which could result in serious personal injury and/or property damage.

▲CAUTION: Touch activated lamps should not be used with Lamp Receivers. Damage to lamp may occur.

▲CAUTION: Do not use the LAMP RECEIVER with a lamp that is connected to a timer or photo-sensor switch. Damage to timer or switch could occur.

Step 1:

Set the HOUSE CODE to the same letter that you selected on the MESSENGER HUB, then plug the LAMP RECEIVER into the AC outlet currently being used by the lamp you wish to control.

Step 2:

Select a UNIT CODE color to match the zone color that you laid out on the back of the INDOOR REMOTE. Now you will need to assign a specific UNIT CODE for the LAMP RECEIVER. Within the color that you have picked you have 3 number choices. In the example in **Figure 1** the LAMP RECEIVER is set to Yellow 8.

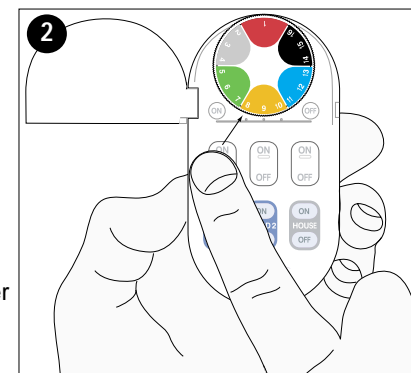
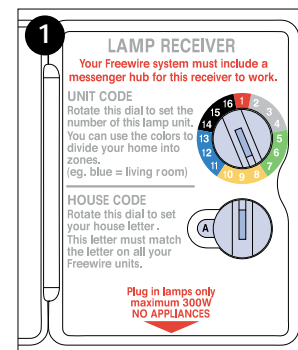
Step 3:

Turn lamp on first, then plug into the receptacle on the underside of the LAMP RECEIVER.

Step 4:

Turn color dial on INDOOR REMOTE so that it matches the color setting on the LAMP RECEIVER. To turn the lamp on and off, press the switch which corresponds with the number selected on the LAMP RECEIVER. **Figure 2** depicts activating LAMP RECEIVER set to Yellow 8.

NOTE: Lamps connected to LAMP RECEIVERS can still be controlled by the lamps switch. Remember that lamp switch must be turned on in order for the lamp to be controlled by the Freewire system.



TROUBLESHOOTING

DIFFICULTY PROGRAMMING RECEIVERS

If you are experiencing problems when programming the BULB RECEIVER or OUTDOOR LAMP RECEIVER, it may be due to electrical interference on the power lines caused by large appliances such as refrigerators or TV's. To avoid the interference, move the RECEIVER and the MESSENGER HUB while it is being programmed to a different wall outlet that is further away from large appliances.

SOME RECEIVERS DON'T RESPOND

Most houses are fed from a 240 volt service which is then split into two phases of 120 volts each in the circuit breaker panel. The most commonly encountered problem with systems which use the existing house wiring to transmit signals is that the signals are received by some Receivers, but not by others. For example, the MESSENGER HUB controls some lights but not others or controls some lights intermittently. This can happen sometimes when the Receiver to be controlled is on the opposite phase of the house wiring to the phase which the MESSENGER HUB is connected to.

If some of the Receivers are not working it may be necessary to:

- move the Receiver to a different wall outlet to test that it works. If it still doesn't work:
- move the Receiver to a different room. If it still doesn't work:
- move the Receiver to the closest outlet that the MESSENGER HUB is plugged into or move the MESSENGER HUB to the closest outlet to the Receiver that is not working.

RECEIVERS TURN ON BY THEMSELVES

If it is suspected that Receivers have turned on or off by themselves, it is possible that a neighbor has a FREEWIRE or compatible system, which could result in unexpected operation of both systems. Unplug all FREEWIRE devices immediately until (1) the interference is identified and eliminated through selection of a different HOUSE CODE to ensure that neither system causes unintended operation of the other system or (2) a blocking filter, Black and Decker Model number PZZ01, is installed. Call 1-888-678-7278 to order. Professional installation recommended. If you cannot identify the source of interference by talking with neighbors who are using a FREEWIRE or compatible system and you do not want to install a blocking filter, or if you have any questions about identifying or eliminating interference, please call 1-800-544-6986 before plugging in or using any FREEWIRE device.

THREE WAY BULBS

Three way bulbs may be used, however, only one level of brightness can be activated using the Freewire system. To change brightness level you will need to turn the switch at the lamp to the desired level of brightness.

NOTE: When using the BULB RECEIVER, you cannot control the lamp by the lamp's switch. Turning the lamp switch off and then sending a Freewire signal within 30 seconds of power being applied to the lamp, will cause the BULB RECEIVER to go into program mode and will need to be reprogrammed. See BULB RECEIVER section / manual.

INTERCOM AND MONITORING SYSTEMS

Intercom and monitoring systems, including baby monitors, that use the house wiring to transmit signals can "block out" FREEWIRE transmissions while the intercom or monitoring system is in "permanent transmit" or "talk" mode. It is NOT possible to have a wireless intercom or monitoring system and a MESSENGER HUB operating in the same house. It is possible that a neighbor's wireless intercom or monitoring system could cause unexpected operation, including failure to operate, of your FREEWIRE system, or that your FREEWIRE SYSTEM could cause unexpected operation, including failure to operate, of your neighbors intercom or monitoring system.

KEY CHAIN REMOTE RANGE OF USE

Placing the MESSENGER HUB on the inside wall closest to driveway or entry way, will often maximize range of KEY CHAIN REMOTE.

MAINTENANCE

Use only mild soap and damp cloth to clean the product. Never let any liquid get inside the product; never immerse any part of the product into a liquid. Avoid using solvents when cleaning plastic parts. Most plastics are susceptible to various types of commercial solvents and may be damaged by their use.

ACCESSORIES

Recommended accessories for use with your tool are available from your local dealer or authorized service center. If you need assistance regarding accessories, please call: 1-800-544-6986. **▲WARNING:** The use of any accessory not recommended for use with this tool could be hazardous.

SERVICE INFORMATION

Black & Decker offers a full network of company-owned and authorized service locations throughout North America. All Black & Decker Service Centers are staffed with trained personnel to provide customers with efficient and reliable power tool service. Whether you need technical advice, repair, or genuine factory replacement parts, contact the Black & Decker location nearest you. To find your local service location, refer to the yellow page directory under "Tools—Electric" or call: 1-800-544-6986.

FULL TWO-YEAR HOME USE WARRANTY

Black & Decker (U.S.) Inc. warrants this product for two years against any defects in material or workmanship. The defective product will be replaced or repaired at no charge in either of two ways.

The first, which will result in exchanges only, is to return the product to the retailer from whom it was purchased (provided that the store is a participating retailer). Returns should be made within the time period of the retailer's policy for exchanges (usually 30 to 90 days after the sale). Proof of purchase may be required. Please check with the retailer for their specific return policy regarding returns that are beyond the time set for exchanges.

The second option is to take or send the product (prepaid) to a Black & Decker owned or authorized Service Center for repair or replacement at our option. Proof of purchase may be required. Black & Decker owned and authorized Service Centers are listed under "Tools—Electric" in the yellow pages of the phone directory.

This warranty does not apply to accessories. This warranty gives you specific legal rights and you may have other rights which vary from state to state. Should you have any questions, contact the manager of your nearest Black & Decker Service Center.

